



Huge North-facing Block Available

Sold

No more waiting... Your opportunity is now available to build your family home that you have always dreamed of!

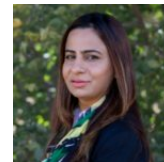
Located in prime location in the heart of Wyndham Vale in Wynbrook estate, this generous 473m² (approx.) north facing land is within a 5 minutes walk to the Wyndham Vale train Station and only a short walk to the Manor lake shopping plaza and to medical centres/child cares. And also, a short drive to Pacific shopping centre, Werribee Eagle stadium and primary and high schools.

With easy access to the future state and local government planned Ring road which connects to the Wyndham Vale to the Princess freeway. Wyndham Vale station served by the V/Line Geelong and Warrnambool services to and from Melbourne CBD. Travel by train from Wyndham Vale and reach the CBD in just 27 minutes, while Geelong is just 37 minutes away.

This land is 100% yours to do with what you will as it is completely easement free. This opportunity will not last long, so why wait?

Call Meenu today on 0413 360 294 to secure this block before you miss out!

DISCLAIMER: All stated dimensions are approximate only. Particulars given are for general information only and do not constitute any representation on the part of the vendor or agent



Meenu Mehndiratta
0413 360 294
meenu@reliancere.com.au



Ravi Gupta
0422 050 078
ravi@reliancere.com.au