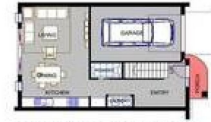




DWELLING 10 1ST FLOOR PLAN



DWELLING 10 GROUND FLOOR PLAN

## DONT MISS OUT!

Sold

These Brand new Townhouses are located in the heart of Deer Park and are only minutes away from all amenities including shopping centre, parks , schools and public transports.

Offering two bedrooms, 1 bathrooms, single automatic garage with built in robes and an open plan kitchen. Features include stone bench tops, splash back, stainless steel gas appliances, evaporative cooling and ducted heating.

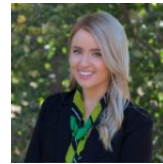
Turn key construction commenced

Only 5% deposit - Balance on completion

Stamp Duty savings

### General Features

1. Property Type:Townhouse
2. Bedrooms:2
3. Bathrooms:1
4. Outdoor Features
5. Garage Spaces:single automatic



Stevie Bell  
(03) 8372 2018  
[stevie@reliancere.com.au](mailto:stevie@reliancere.com.au)