



Short Stroll to Wyndham Village

Contact Agent

Located in one of Tarneit's most dominant locations is this beautiful family home that ticks all of the boxes.

In the heart of Tarneit and situated within a short stroll to Wyndham Village Shopping centre, Opposite Thomas Carr Secondary school and close proximity to the Tarneit Train Station. only 2 mins Drive away from childcare and 0.14 Km drive away from St Francis of Assisi Catholic Primary School Tarneit

This well-presented house offers four generous sized bedrooms, master with full en-suite and walk in robe, conveniently located central bathroom, two living zones, beautiful kitchen complete with walk in pantry ample cupboard space.

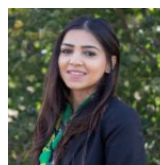
This house comprises of:

- Master bedroom with WIR and ensuite
- Two living rooms
- Two Split system aircon
- Walk in pantry in Kitchen
- Led lights
- Ducted heating
- Shed at the back
- Artificial grass
- Low maintenance
- Dishwasher
- 900mm appliances
- Fans in rooms
- Carpet and tiles

Contact Nikki Kaur for more information

Please see the below link for an up-to-date copy of the Due Diligence Check :<http://www.consumer.vic.gov.au/duediligence>

DISCLAIMER: All stated dimensions are approximate only. Particulars given are for general information only and do not constitute any representation on the part of the vendor or agent.



Nikki Kaur
0432 817 981
tarneitleasing@reliancere.com.au



Bansari Raval
0459 902 092
tarneitrentals@reliancere.com.au