



Lovely 3 bedroom unit in Werribee!

Contact Agent

Close to Recreation Centre Reserve, Werribee Community Garden and Thomas Chirnside Primary School.

Comprising:

- 2 bedroom with carpets (main bedroom with walk-in robe and ensuite)
- Carpeted lounge area
- Central bathroom with bath and shower
- Separate toilet
- Great size kitchen with gas cooktop/electric oven and rangehood
- Sunny meals area
- Secured, low maintenance garden
- Single garage

Photo ID required for an Inspection.

Please see the below link for an up-to-date copy of the Due Diligence Check :<http://www.consumer.vic.gov.au/duediligence>

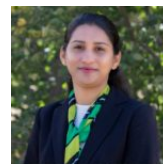
DISCLAIMER: All stated dimensions are approximate only. Particulars given are for general information only and do not constitute any representation on the part of the vendor or agent.

"OFI FOR PRE-REGISTERED ENQUIRIES ONLY"

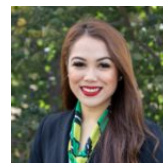
All attendees must submit an enquiry before coming into the open for inspection.

Please submit an enquiry to be registered or please contact Deepthi Yedla at 0467 237 493 or Samantha Grima on 0412 614 677 to register.

PLEASE NOTE: Open for inspection times are subject to change or



Deepthi Yedla
0404 130 587
deepthi@reliancere.com.au



Samantha Grima
0404 133 145
samantha@reliancere.com.au

cancellation without notice. We suggest checking the OFI details on the day of inspection