

## Unbeatable Location

### Contact Agent

This brand new 4-bedroom property situated in the sought-after Alwood Estate has everything you need and more!

4 spacious bedrooms; master with en-suite and walk in robe with all additional bedrooms fitted with built in robes.

An open floor plan features lounge which leads through to an open plan kitchen & dining area.

The kitchen includes stainless steel appliances including a dishwasher, 600mm oven & ample storage.  
Outdoors offers low maintenance front and back gardens.

Situated on Geelong Road, the freeway is accessible enough to offer freedom but far enough away so that fresh country air and quiet serenity are yours to enjoy.

Recreation areas, barbecue facilities, Werribee River, You Yangs National Park, Riverbed Historical Park, Werribee Mansion, Equestrian Centre and the spectacular Werribee Open Range Zoo and Safari Park, are all amazing local destinations offering residents entertainment on the doorstep.

Go east onto the Princes Freeway to Melbourne for a half hour journey to work, sport and entertainment. Werribee Township is blessed with the wonderful Werribee Plaza Shopping Centre featuring Gold Class cinemas, fresh food markets, supermarkets, large chain stores and a busy public transport hub

Additional features include;

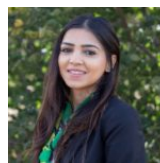
- Ducted heating
- Split system in Living room
- Carpet to bedrooms
- Dishwasher
- Double remote garage

Photo ID required for an Inspection.

Please see the below link for an up-to-date copy of the Due Diligence Check :<http://www.consumer.vic.gov.au/duediligence>



**Bansari Raval**  
0459 902 092  
tarneitrentals@reliancere.com.au



**Nikki Kaur**  
0432 817 981  
tarneitleasing@reliancere.com.au

DISCLAIMER: All stated dimensions are approximate only. Particulars given are for general information only and do not constitute any representation on the part of the vendor or agent.

PLEASE NOTE: Open for inspection times are subject to change or cancellation without notice. We suggest checking the OFI details on the day of inspection.